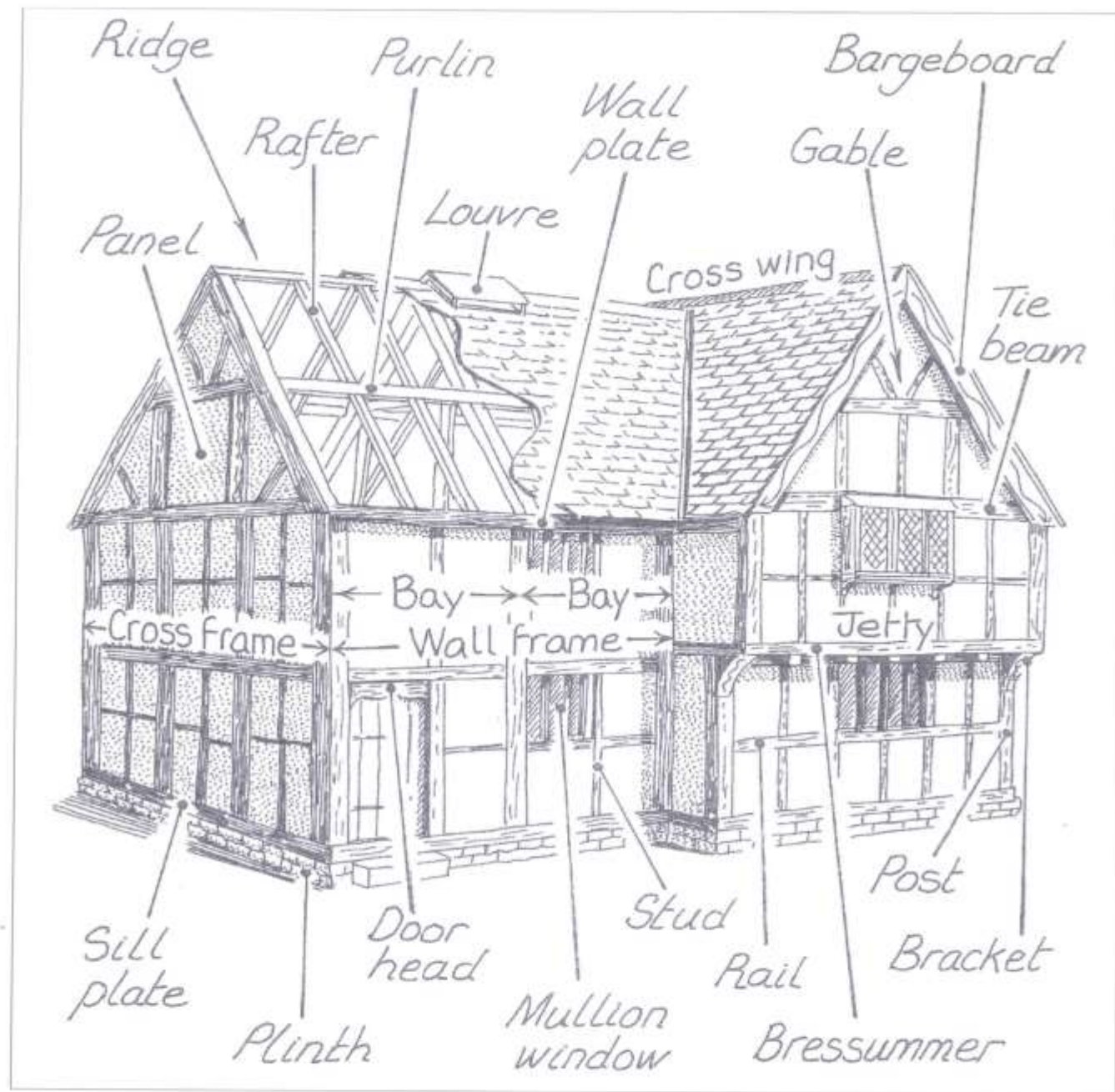
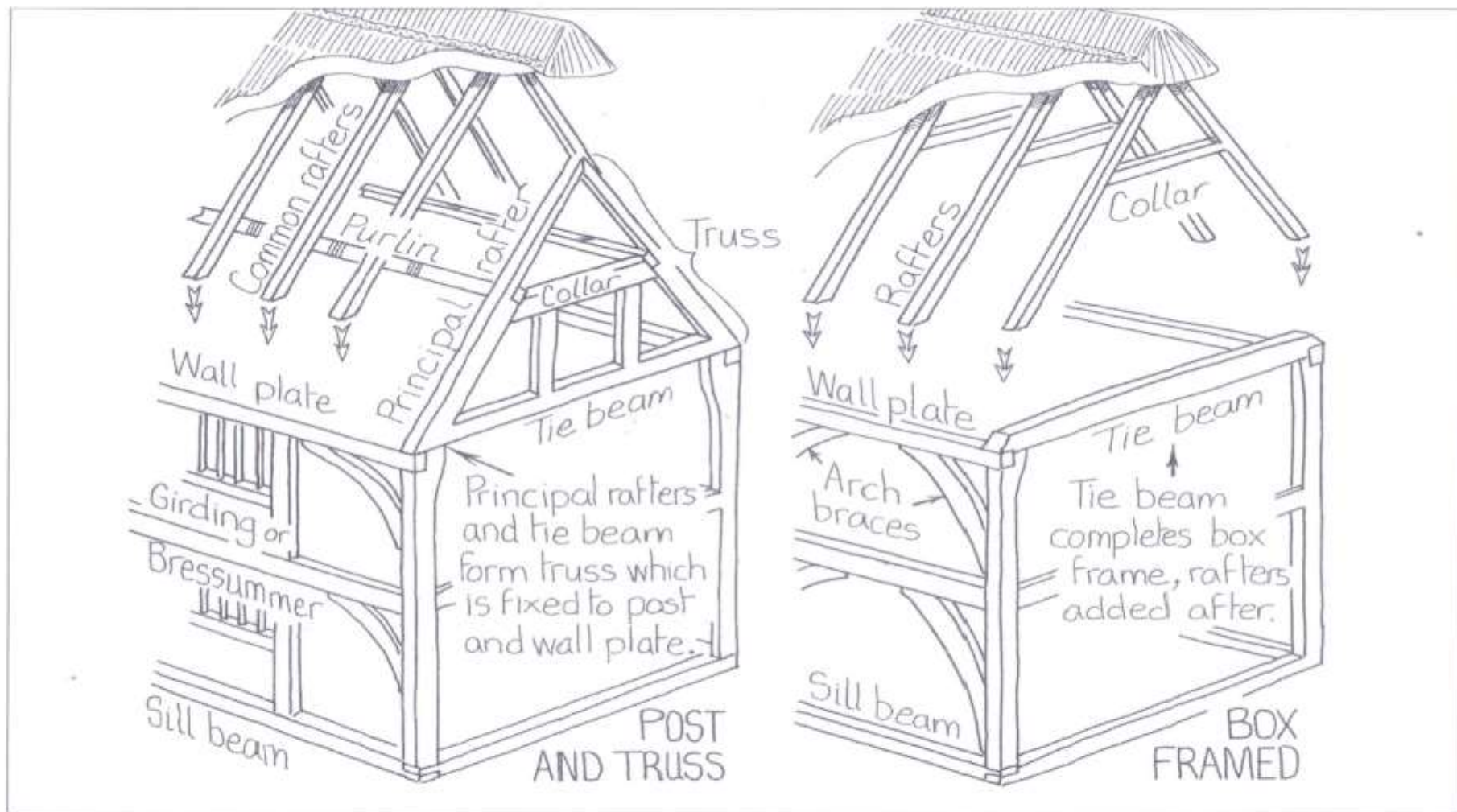


# The development of Pirton's timber framed buildings



# Terminology





**FIG 5.8:** Labelled drawing of a post and truss building (left) where the principal rafters are part of the cross wall with thinner common rafters between and a box framed building (right) in which similar sized rafters are separate from the structure below.

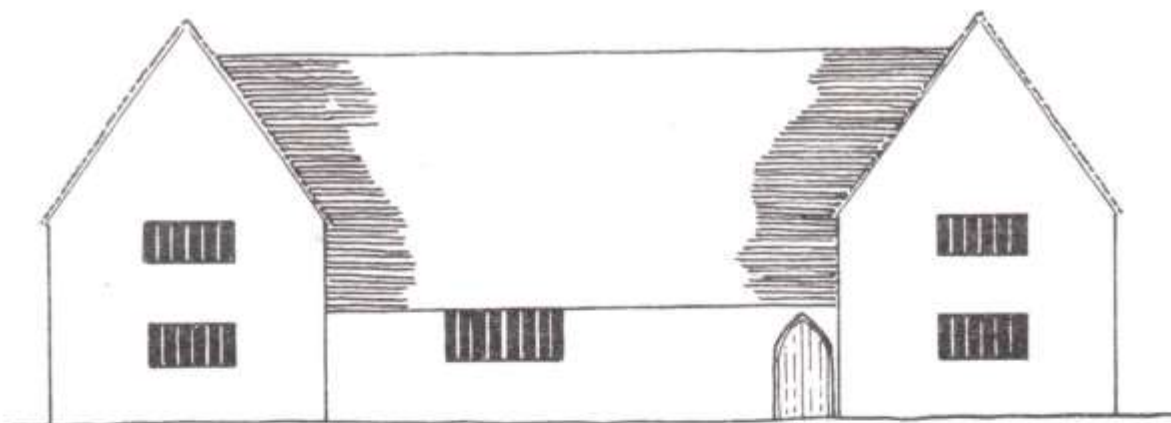




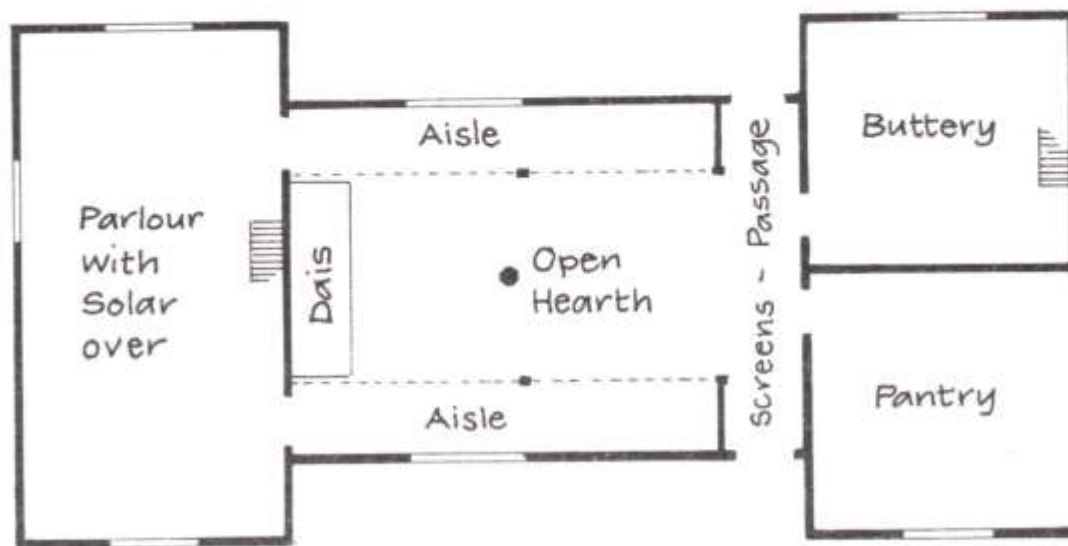




# The development of the timber framed house.



Elevation



Ground Floor Plan

6. Typical aisled house with two cross-wings.



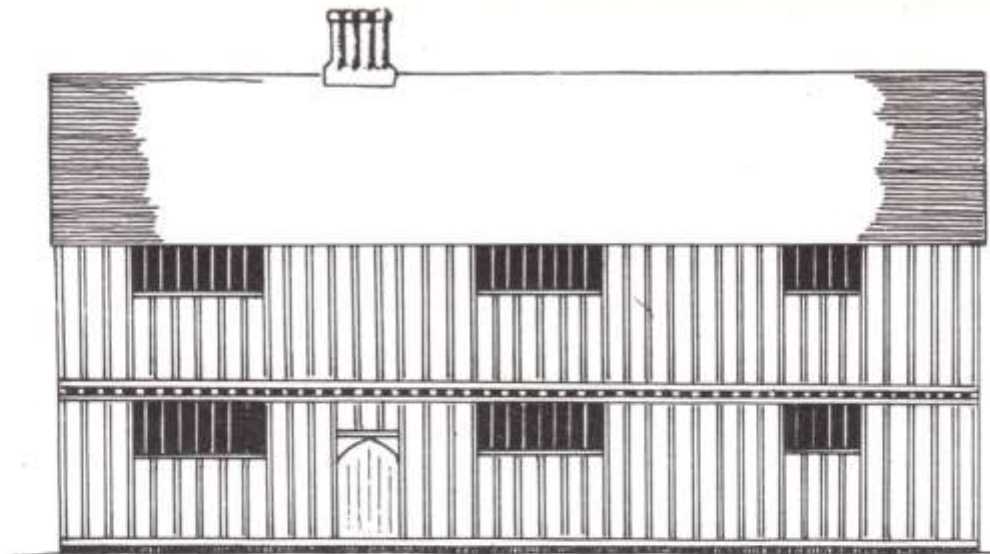


ELEVATION



GROUND FLOOR PLAN

13. Typical fifteenth-century open-hall farmhouse in eastern England.



Elevation



Ground Floor Plan

55. Typical sixteenth-century continuously jettied farmhouse in eastern England.

LABOURERS' ACCOMMODATION




[3] Bedfordshire, Great Barford, Even Nos. 92-102, Green End. Range of cottages built in c. 1800.



What are we  
looking for?





Roof structure  
Wall construction  
Joints  
Windows and openings  
Other architectural features



Inside the roof























































# Changing roofs





















# Wall structure and joints





















































































# Windows and openings



















# Fireplaces































# Apotropaic Marks

















House or barn?











